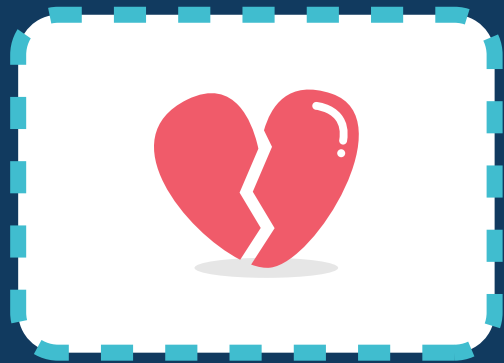
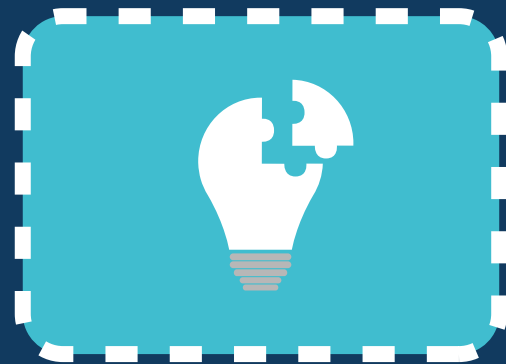


ClimateVerse: EARTH'S TRIVIA JOURNEY



Profile card 2

A middle age non-binary constructor worker in South America.

Solution card A

Promote heat resilience

Implement heat action plans, create cool zones, and educate communities on how to stay safe during heatwaves.

Problem card A

Heatwave

This card affects the following communities: 2, 3, 4, 6

Question

Health

LEVEL 1

Climate change be bad for the health of our lungs?

Give a short answer

LEVEL 3

The spread of which diseases is facilitated by extreme weather events like floods and hurricanes associated with climate change?

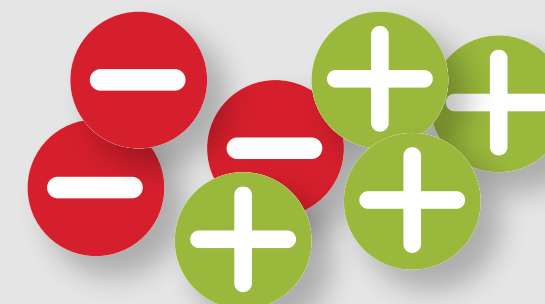
Waterborne diseases

True or false?

LEVEL 2

International Youth Health Organization (YHO) recognizes environmental health and climate change as one of its priorities.

✓ True



GAME RULES

ClimateVerse: EARTH'S TRIVIA JOURNEY



AGE OF THE PLAYERS 8(+)

Level 1 easy (8+), Level 2 medium (13+), Level 3 advanced (18+).

Less experienced players can opt for the easy level, while older and more seasoned players can choose between the easy and advanced levels. There is an opportunity for mixed-age and skill-level groups to play together, tailoring the difficulty of the questions to their expertise.

NUMBERS OF PLAYERS (3-6)

This game is played individually.
The number of players ranges **from 3 to 6**,
each representing a community.
All the communities together form an ecosystem.

OBJECTIVE

To reach climate resilience as an ecosystem.

The objective of the game is for all participants to work together to help communities facing climate change challenges become more resilient. To achieve this, players must answer trivia questions correctly to earn positive tokens while avoiding negative tokens. The goal is to reach ecosystem climate resilience.

GAME COMPONENTS

- Game rules (this document)
- **88 Trivia cards:** 3 decks of question cards with 3 levels of difficulty (level 1 – easy, level 2 – medium, level 3 – advanced)
- **6 Community cards**
- **12 Problem cards**
- **9 Solution cards**

- **37 Negative tokens**
- **74 Positive tokens**
- **Climate resilience tracker**
- **A timer is needed** to play the game, but is not included in the game components. Anything can be used to track time.

SETUP

Players can sit in a circle or around a table, leaving space in the centre for the different decks of cards, tokens, and timer.

Divide the question cards by level. Choose the difficulty level of the questions based on your age or experience. Younger or less experienced players might want to start with level 1. If you are older or more experienced, you can play all levels (level 1 – easy, level 2 – medium, level 3 – advanced).

Shuffle the Community cards. Each player draws a random Community card that will identify them for the rest of the game.

Set up the climate resilience tracker in the centre with the arrow in the middle.

Shuffle the Trivia cards and place them face-down in the centre.

Shuffle the Solution and Problem cards separately and place them face-down side by side with the questions.

Gather the positive tokens and place them facing up next to the Solution cards deck. Gather the negative tokens and place them facing up next to the Problem cards deck.

Set the timer (you can use whatever device for this!).

GAMEPLAY

1 The youngest player starts and the game continues clockwise.

2 A player draws the "Start from here" card.

3 The person to the right of the initial player selects a card from the Trivia deck and poses the question to the first player. The first player then has 1 minute to respond.

A. If the player gets the question right:

- The player draws a Solution card from the Solution card deck.
- The problems that are affected by the solution are the ones with the same uppercase letter.
- **The communities that can profit from the Solution card will get a positive token that matches the Solution card.**

B. If the player gets the question wrong:

- The player draws one Problem card from the Problem card deck.
- **The communities affected by the Problem card will get 2 negative tokens that match their respective Problem card.**
- The affected communities are written on the Problem cards.
- When the communities get a token, they keep it next to their Community cards.
- Positive tokens are solutions to negative tokens. If a community gets a positive token that solves their matching negative token, all three tokens go back to the "tokens' pool" and the Solution and Problem cards go back to the deck.

4 Once all the affected communities have collected their respective positive or negative tokens, that player's turn is finished and the game continues clockwise.

5 Once all players have answered a question and the communities have collected their tokens, the round finishes, and the ecosystem will assess their climate resilience using the climate resilience tracker.

- If the ecosystem as a whole has more positive tokens than negative ones, the compass of the tracker moves one level to the right (recovery zone).
- If the community as a whole has more negative tokens than positive ones, the compass of the tracker moves one level to the left (danger zone).

The first 5 rounds are played by communities as individuals, meaning that only the player can answer the question. After that, at the beginning of each round, the player has the option to choose if they will play as an individual or in a team with the whole ecosystem (except for the person reading the question), thus offering the opportunity to work in a group to answer the question on the Trivia card.

END OF THE GAME

The ecosystem wins if the players achieve climate resilience.
The ecosystem loses if it reaches an apocalypse.

DIFFICULTY

There are 3 levels of difficulty:
level 1 – easy, level 2 – medium, level 3 – advanced

- The difficulty level is chosen by the players at the beginning of the game.
- There is the possibility to mix and use cards of different difficulties, but in this case, the rules are the same for each level.



The game was prepared by the International Youth Health Organization and imaginative youth who attended the Study Session "Mobilising Youth towards Climate and Health Injustice". This would not be possible without the support of the Council of Europe and the European Youth Foundation.



Start from here (Level 1)

Discuss the following question as a group.
Once you feel comfortable with your answer,
you can start playing the game.

**What is
climate change?**



You can now start playing!

Climate change means that the Earth is getting warmer due to the overproduction of greenhouse gases from activities like driving cars and operating factories. This leads to issues such as melting ice, rising sea levels, and increased extreme weather events, including wildfires and floods.



Start from here (Level 2 & 3)

Discuss the following question as a group.
Once you feel comfortable with your answer,
you can start playing the game.

**What is
climate change?**



You can now start playing!

Climate change is a complex phenomenon characterized by alterations in the Earth's climate system over extended periods. It results from the accumulation of greenhouse gases, primarily carbon dioxide, in the atmosphere due to human activities like the burning of fossil fuels, land-use changes, and industrial processes. This leads to an enhanced greenhouse effect, causing global warming and a range of environmental and societal impacts, including altered weather patterns, sea-level rise, and ecosystem disruptions.



Profile card

**A successful
businesswoman who
owns a luxury resort
in Western Europe.**



Profile card

**A middle age non-binary
constructor worker in
South America.**



Profile card

**A young fisherman
in a village located
on a small island.**



Profile card

**An indigenous woman
living in Eastern Africa
with her family.**



Profile card

**A physically disabled
55-year-old vineyard
owner in Southern Asia.**



Profile card

**A 30-year-old
pregnant woman
from Micronesia.**



A

Problem card

Heatwave

This card affects the following communities:

2, 3, 4, 6



B

Problem card

Malaria outbreak

This card affects the following communities:

2, 4, 5



C

Problem card

Increase in atmospheric ozone

This card affects the
following communities:

1, 5



D

Problem card

Reduction in crop harvest

This card affects the
following communities:

4, 5



E

Problem card

Cholera outbreak

This card affects the following communities:

2, 4, 5



F

Problem card

Eco anxiety rise

This card affects the following communities:

1, 2, 5



Problem card

Post-traumatic stress disorder

This card affects the
following communities:

3, 4, 6



Problem card

Hurricane

This card affects the following communities:

2, 3, 4, 5



Problem card

Fires

This card affects the following communities:

1, 4, 5



Problem card

Floods

This card affects the following communities:

3, 4, 5, 6



Problem card

Storms and sea level rise

This card affects the
following communities:

3, 6



H

Problem card

Water crisis

This card affects the following communities:

3, 4, 5, 6



A

Solution card

Promote heat resilience

Implement heat action plans, create cool zones, and educate communities on how to stay safe during heatwaves.



Solution card

Vector control program

Invest in vector control measures such as mosquito nets, insect repellents, and habitat reduction to minimize disease transmission.



C

Solution card

Clean energy transition

Transition to clean and renewable energy sources to reduce air pollution and improve air quality.



C

Solution card

Green spaces and urban planning

Create green spaces and implement urban planning strategies to mitigate pollen exposure and improve respiratory health.



D

Solution card

Sustainable agriculture

Promote sustainable farming practices, support local food systems, and reduce food waste to enhance food security.



E

Solution card

Water treatment infrastructure

Invest in improved water treatment and sanitation infrastructure to ensure safe and clean drinking water.



Solution card

Psychosocial support

Provide mental health services and psychosocial support to communities affected by climate-related disasters.



Solution card

Disaster preparedness

Promote disaster preparedness and resilience, including first aid training and evacuation plans.



Solution card

Water conservation measures

Implement water conservation measures, such as rainwater harvesting and efficient irrigation practices, to address water scarcity.

Question



Health

LEVEL 1



Give a short answer

How can climate change be bad for the quality of the air we breathe and the health of our lungs?

Climate change can be bad for our health in many ways. One example is that the air we breathe is full of small particles, like nitrogen oxides, that damage our lungs, which can lead to different illnesses.

LEVEL 1



Choose the correct **answers**

Which groups are most at risk for heat-related illnesses during heat waves that can be a consequence of climate change?

- | | |
|--|---|
| <input checked="" type="checkbox"/> Children | <input checked="" type="checkbox"/> Seniors |
| <input type="checkbox"/> Healthy adults | <input checked="" type="checkbox"/> Teenagers |

LEVEL 1



Choose the correct **answer**

Which aspects of our health
are impacted by air
pollution?

Physical health

Mental health

Both physical and
mental health

None of the above

LEVEL 1



Choose the correct **answers**

Which of the following health problems can be made worse by air pollution?

- | | |
|---|---|
| <input checked="" type="checkbox"/> Allergies | <input type="checkbox"/> Faster growth |
| <input type="checkbox"/> Superpowers | <input checked="" type="checkbox"/> Sleep |

LEVEL 1



Choose the correct **answer**

What can you do to help protect your physical health from the effects of climate change?

- Never use sunscreen
- Stay hydrated and away from sun during heat waves
- Buy more plastic products
- All of the above

LEVEL 1



Choose the correct **answer**

How can your mental health be affected while spending time in green spaces?

Feel more worried

Feel better, less stressed

Less happiness

None of the above

LEVEL 1



True or false?

**Climate change is only about
rising temperatures and
doesn't affect human and
animal health.**

✗ False

LEVEL 1



True or false?

**Climate change is a problem
that only affects certain
parts of the world, so it
doesn't have consequences
on everyone's health.**

✗ False

LEVEL 1



True or false?

Climate change can cause wildfires to become more common and severe, harming physical and mental health through injuries, smoke exposure, and increased stress.

 True

LEVEL 1



True or false?

Climate change is a worldwide issue that requires action from people globally to protect their own health, future generations, and the planet's well-being.

 **True**

LEVEL 1



Give a long answer

What should you do if there is a lot of rain and a lot of water in the streets (floods)?

You should stay safe inside your home. Try to go to a higher floor in your house if you can, so you stay dry and safe. Don't go out to run or play in the water because it can be dangerous.

LEVEL 1



Give a short answer

How can planting trees help improve air quality and, in turn, be good for our physical health, especially in the areas more affected by climate change?

There are several reasons: Trees absorb carbon dioxide and release oxygen, improving air quality and respiratory health. Additionally, trees can regulate local temperatures, meaning areas with more trees often experience cooler air temperatures.

LEVEL 1

Question



Health



Give a **long answer**

What is climate change?

Climate change refers to long-term shifts in the Earth's average temperature and weather patterns. It's primarily driven by human activities, such as burning fossil fuels and deforestation, which release greenhouse gases into the atmosphere. These gases trap heat, leading to global warming, rising sea levels, and more frequent and severe weather events.

LEVEL 2



Choose the correct **answer**

Which of these can be
a mental health challenge
due to climate change?

Increased access to
clean water

Increased social
support

Climate anxiety and
stress

Improved air quality

LEVEL 2



Choose the correct **answers**

Which of the following health issues are worsened by extreme heat resulting from climate change?



Asthma



Allergies



Diabetes



Broken bones

LEVEL 2



Choose the correct **answer**

What can individuals do to reduce their carbon footprint and contribute to a healthier planet?

Drive alone in a car

Waste water



Use reusable water

All of the above

bottles, bags, and
containers

LEVEL 2



True or false?

Rising sea levels caused by climate change can lead to the contamination of freshwater sources in coastal areas, therefore reducing the water that can be used for drinking.

✓ True

LEVEL 2



True or false?

**Climate change has no
impact on the availability
and quality of drinking
water.**

✗ False

LEVEL 2



True or false?

Climate change has no impact on increasing the spread of infectious diseases such as malaria and tick-borne diseases.

✗ False

LEVEL 2



True or false?

Vulnerable populations, such as low-income communities, are disproportionately affected by the health impacts of climate change.

✓ True

LEVEL 2



True or false?

Extreme heat waves caused by climate change can lead to heat exhaustion and heatstroke, which are harmful to physical health.

✓ True

LEVEL 2



True or false?

Rising temperatures due to climate change can increase the risk of illnesses like heat-related cramps.

 **True**

LEVEL 2



True or false?

Climate change can lead to an increase in the spread of infectious diseases like malaria.

 True

LEVEL 2



True or false?

Climate change can lead to more frequent and severe natural disasters, such as hurricanes and floods, which can affect people's physical and mental health.

✓ True

LEVEL 2



True or false?

Climate change can affect the habitats of animals, which can indirectly impact human health by disrupting ecosystems and food sources.

 **True**

LEVEL 2



Give a **short answer**

How can we reduce our carbon footprint to help combat climate change and protect our health?

Some solutions include reducing energy consumption, using public transportation, eating less meat, and cutting down on purchases and waste, like clothes, objects, and plastic bottles.

LEVEL 2



Give a **short answer**

How might spending time in nature help improve mental health in the context of climate change?

It could include reducing stress, providing a sense of calm, and promoting physical activity. It can also help to take action in combating climate change through activism.

LEVEL 2



Choose the correct **answer**

Which of these foods has
the highest carbon
footprint?



Beef



Vegetables



Eggs



Milk

LEVEL 2

Question



Health

LEVEL 3



Give a **short answer**

**Describe the relationship
between climate change
and Zika virus.**

Climate change can lead to the spread of diseases such as Zika and malaria by enlarging the habitats suitable for disease-carrying mosquitoes, thereby increasing the regions where these mosquitoes can survive and infect humans.

LEVEL 3



Choose the correct **answer**

Which of the following is not a potential consequence of climate change on mental health?

- Increased stress and anxiety
- Decreased risk of depression
- Post-traumatic stress disorder (PTSD)
- Sleep disturbances

LEVEL 3



Choose the correct **answers**

Which of the following is a direct health consequence of climate change for vulnerable populations?

- Decreased food insecurity
- Increased access to healthcare

- Greater risk of heat-related illnesses
- Lower prevalence of chronic diseases

LEVEL 3



Choose the correct **answers**

Which groups are more susceptible to heat-related illnesses from extreme heat linked to climate change?

- Office workers
- Pregnant women

- Receptionists
- Construction workers

LEVEL 3



True or false?

Climate change can lead to food insecurity, especially among indigenous populations that sometimes rely on traditional farming practices.

✓ True

LEVEL 3



Give a long answer

Explain the concept of "environmental justice" in the context of climate change and its implications for vulnerable communities.

Environmental justice, in the context of climate change, is about ensuring that all communities, especially those that are vulnerable or disadvantaged, are treated fairly and equitably when it comes to environmental policies and the impacts of climate change. It means that the burdens of climate change, like pollution and extreme weather events, shouldn't unfairly fall on certain groups, such as low-income or minority communities. Instead, efforts should be made to protect and involve these communities in climate action to reduce inequalities and promote a healthier environment for everyone.

LEVEL 3



Give a **long answer**

Name one way in which climate change can impact the availability of fresh, clean water and explain its health consequences.

Reasons include rising temperatures impacting the water cycle, leading to more ice melt and rising sea levels. This can pollute freshwater sources, affecting drinking water quality and the ability to irrigate fields.

LEVEL 3

Question



Environment

LEVEL 1



Choose the correct **answer**

Which gas, often seen as the main cause of climate change, is released when we burn fuels like coal and oil?

Oxygen

Helium



Carbon dioxide

Nitrogen

LEVEL 1



Give a **short answer**

How do we call an unusually long and intense period of hot weather for a certain area?

Heatwave

LEVEL 1



Give a **short answer**

What is the name for a destructive windstorm driven by warm ocean waters, often linked to climate change?

Hurricane or typhoon
(depending on the region)

LEVEL 1



Choose the correct **answer**

What animal spreads
malaria in the human
population?

- | | |
|--|--|
| <input checked="" type="checkbox"/> Female Anopheles Mosquitos | <input type="checkbox"/> North American Brown Rats |
| <input type="checkbox"/> Goliath Tigerfish | <input type="checkbox"/> Rufos-bellied Thrushes |

LEVEL 1



Choose the correct **answer**

Which gas, often seen as the main cause of climate change, is released when we burn fuels like coal and oil?

- Nitrous oxide
- Carbon dioxide

- Methane
- Iron

LEVEL 1



Choose the correct **answer**

Which of the following is a major contributor to food waste in households?

Eating leftovers

Meal planning

Buying in bulk

Poor storage and management of food

LEVEL 1



Choose the correct **answer**

Increased ocean temperatures
are a threat to which vital
marine ecosystems found
in tropical regions?

Mangrove
forests

Coral reefs

Seaweed
forests

Estuaries

LEVEL 1



Give a **short answer**

What is the name for a long period of below-average rainfall that can lead to water shortages, crop failures, and threats to food, worsened by climate change?

Drought

LEVEL 1



Give a **short answer**

Which extreme weather event, influenced by climate change, involves periods of long, intense rainfall that can cause rivers to overflow their banks?

Flood (river flooding)

LEVEL 1



Choose the correct **answer**

Climate change can disrupt ecosystems, leading to shifts in species distribution. What is the term for the process in which species move to cooler regions as temperatures rise?

- Hibernation
- Migration

- Photosynthesis
- Adaptation

LEVEL 1

Question



Environment

LEVEL 2



Give a **short answer**

What is a large-scale weather system characterized by strong winds rotating around a central low-pressure area, typically with a well-defined center known as the eye?

Cyclone

LEVEL 2



Choose the correct **answer**

What percentage of food produced for human consumption is estimated to be lost or wasted globally each year?

5%



33%

20%

50%

LEVEL 2



Choose the correct **answer**

What percentage of water
on Earth is usable and
available fresh water?

0.5%

5%

8%

15%

LEVEL 2



Choose the correct **answer**

How do soil erosion and degradation affect agricultural productivity and food security?

- Have no impact
- Improve soil quality

- Reduce productivity and food security
- Increase food security

LEVEL 2



Choose the correct **answer**

How much water is wasted globally every year?

- 34 million litres
- 310 million litres

- 1 trillion litres
- 6.4 trillion litres

LEVEL 2



Give a **short answer**

Rising global temperatures, causing glaciers and ice sheets to melt, can lead to higher sea levels and a greater risk of what type of extreme weather event along coastlines?

Coastal flooding or storm surges

LEVEL 2



Give a **short answer**

What is the term for the practice of reducing greenhouse gas emissions through actions like using energy-efficient appliances and vehicles?

Mitigation

LEVEL 2



Give a **short answer**

What is the term for strategies that involve changing due to the impacts of climate change, such as building flood defences and drought-resistant crops?

Adaptation

LEVEL 2



Give a **short answer**

What is the primary human activity causing deforestation, releasing carbon from trees and contributing to climate change?

Logging or clear-cutting

LEVEL 2



Give a **short answer**

Which extreme weather event is often linked to flooding, landslides, and property damage, with climate change increasing the risk?

Heavy rainfall or deluge

LEVEL 2

Question



Environment

LEVEL 3



Give a **short answer**

As atmospheric carbon dioxide levels rise, which vitamins are lost, leading to decreased nutritional value in crops like corn and wheat?

Iron and zinc

LEVEL 3



Give a **short answer**

What is the term for rotating different crops in the same field across seasons to enhance soil health and increase crop yields, often used to combat food scarcity?

Crop rotation

LEVEL 3



Give a **short answer**

What term describes the transformation of fertile land into desert due to climate change, contributing to food scarcity?

Desertification

LEVEL 3



Give a **short answer**

The spread of which diseases, such as cholera and dysentery, can be facilitated by extreme weather events like floods and hurricanes associated with climate change?

Waterborne diseases

LEVEL 3



Give a **short answer**

What is the name of the process where carbon dioxide is absorbed by the oceans, making seawater more acidic and affecting marine ecosystems?

Ocean acidification

LEVEL 3



Choose the correct **answer**

As global temperatures rise, many plant and animal species face increased risk of extinction. What is the term for species that are highly vulnerable to climate change impacts?

Endangered species

Indicator species

Keystone species

Climate-sensitive species

LEVEL 3



Choose the correct **answer**

Rising global temperatures can lead to the depletion of what vital underground water source, particularly in arid regions?

Rivers



Aquifers

Oceans

Lakes

LEVEL 3



Choose the correct **answer**

What is the term for the natural process that removes carbon dioxide from the atmosphere and stores it in carbon sinks, helping to regulate the Earth's climate?

Carbon footprint

Carbon cycle

Carbon capture and storage (CCS)

Carbon exchange

LEVEL 3



Choose the correct **answer**

What is the name of the branch of science that studies the effects of climate change on the timing of natural events in ecosystems, like flowering or migration?



Phenology



Succession



Ecotone



Symbiosis

LEVEL 3

Question



Governance

LEVEL 1



Choose the correct **answer**

What does IPCC stand for?

- International Panel on Cake Creation
- Indifferent Politicians against Climate Change
- International Panel on Cookies and Cream
- Intergovernmental Panel on Climate Change

LEVEL 1



Choose the correct **answer**

Which country hosted the United Nations Framework Convention on Climate Change (UNFCCC) conference in 2015, leading to the Paris Agreement?

Germany

Brazil



France

United States

LEVEL 1



Choose the correct **answer**

What is the WHO?

- World Health Organization
- Weather and Health Organization
- Worldwide Humanitarian Organization
- Waste and Hunger regulating Organization

LEVEL 1



Choose the correct **answer**

The WHO is a ...
agency

Council of Europe
(CoE)

United Nations
(UN)

European Union
(EU)

North-Atlantic Treaty
Organization (NATO)

LEVEL 1



Choose the correct **answer**

What is the common abbreviation for the Intergovernmental Panel on Climate Change, a scientific body that assesses climate change science?



IPCC



UNFCCC



GCF



WHO

LEVEL 1



Choose the correct **answer**

The 2015 Paris Agreement committed to limit the rise in global average temperature to 1.5°C above pre-industrial (1800s) levels through climate mitigation by:

2015

2030

2050

2100

LEVEL 1

Question



Governance

LEVEL 2



Choose the correct **answer**

What is the purpose of the Montreal Protocol?

- Address climate change
- Protect the ozone layer
- Promote sustainable agriculture
- Regulate international trade

LEVEL 2



True or false?

International Youth Health Organization (YHO) recognizes environmental health and climate change as one of its priorities.

 True

LEVEL 2



Choose the correct **answer**

What is the role of the World Health Organization (WHO) in climate change adaptation and health?

Monitoring carbon emissions

Regulating emissions of all greenhouse gases

Providing guidance on public health impacts of climate change

Actively promoting nuclear energy

LEVEL 2



Choose the correct **answer**

The EU took a major step in climate change regulations in 2020 when they passed the...

- NextGen EU Plan
- Natural Resources Deal
- European Future
- Green New Deal
- Vision

LEVEL 2



Choose the correct **answer**

What is the "two-degree target" in relation to climate policy?

- Limiting global warming to a 2°C increase above pre-industrial levels
- Achieving a 2% reduction in emissions annually
- Phasing out 2% of fossil fuel subsidies
- Increasing renewable energy by 2% each year

LEVEL 2



Choose the correct **answer**

Name the UN agency responsible for preventing new disaster risks and enhancing resilience through comprehensive multi-hazard risk management.

- United Nations Disaster Prevention (UNDP)
- World Hazard Organization (WHO)
- United Nations Environment Programme (UNEP)
- United Nations Office for Disaster Risk Reduction (UNDRR)

LEVEL 2



True or false?

UN Secretary General António Guterres denied the climate emergency by saying: "Floods, droughts, heatwaves, extreme storms, and wildfires are going from good to better, not breaking records with alarming frequency. Heatwaves in Europe are a hoax. Colossal floods in Pakistan do not exist. Prolonged and severe droughts in China, the Horn of Africa and the United States are just myths."

✗ False

LEVEL 2

Question



Governance



Choose the correct **answer**

What is the primary focus of the World Meteorological Organization (WMO) in relation to climate change?

- Disaster relief efforts
- Provide weather and climate information worldwide to prepare for weather and climate events
- Present a daily international weather forecast
- Promoting fossil fuel use and advocating for carbon capture techniques in partnership with private partners

LEVEL 3



Choose the correct **answer**

The Loss and Damage Fund was agreed to at which COP?

- | | |
|---|---|
| <input type="checkbox"/> COP20 (Lima, 2014) | <input type="checkbox"/> COP5 (Bonn, 1999) |
| <input checked="" type="checkbox"/> COP27 (Sharm el-Sheikh, 2022) | <input type="checkbox"/> COP10 (Buenos Aires, 2004) |

LEVEL 3



Choose the correct **answer**

In the context of climate negotiations, what does CMA stand for?

- Climate Market Agreement
- Climate Monitoring Authority
- Conference of the Parties serving as the Meeting of the Parties to the Paris Agreement
- Carbon Mitigation Alliance

LEVEL 3



Choose the correct **answer**

In climate negotiations, what is meant by "common but differentiated responsibilities"?

- Equal distribution of emissions between countries
- Joint and equal responsibility for climate change
- Sharing common responsibilities while acknowledging different capacities to fulfilling commitments by individual countries
- A global carbon tax to all companies and countries

LEVEL 3



Choose the correct **answer**

Which international agreement established the Convention on Biological Diversity (CBD)?

Montreal Protocol

Paris Agreement

Kyoto Protocol

Rio Earth Summit

LEVEL 3

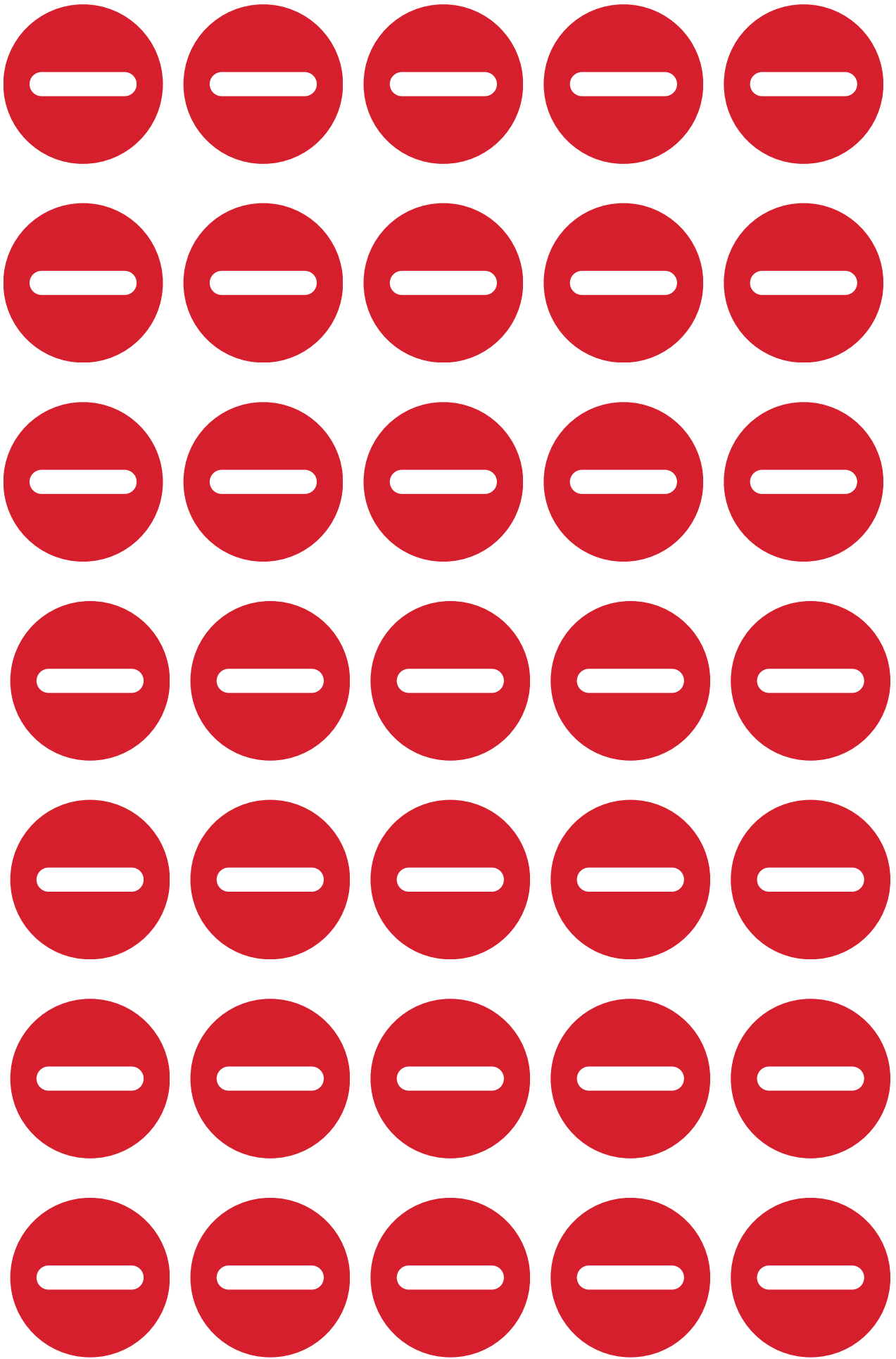


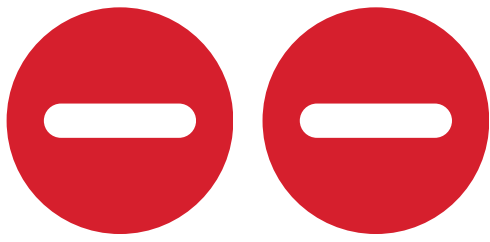
Choose the correct **answer**

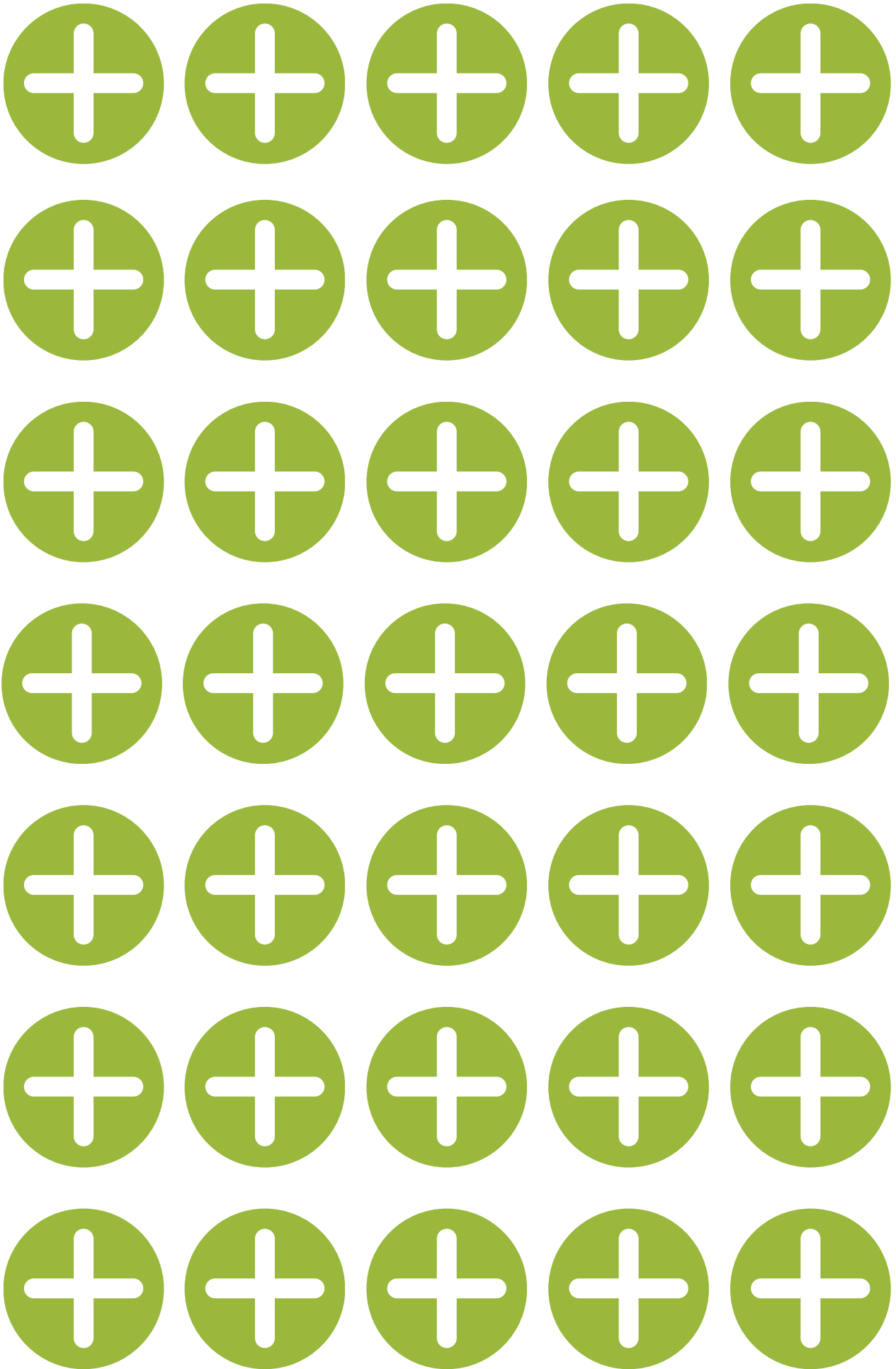
What was the main outcome of the Kyoto Protocol, adopted in 1997?

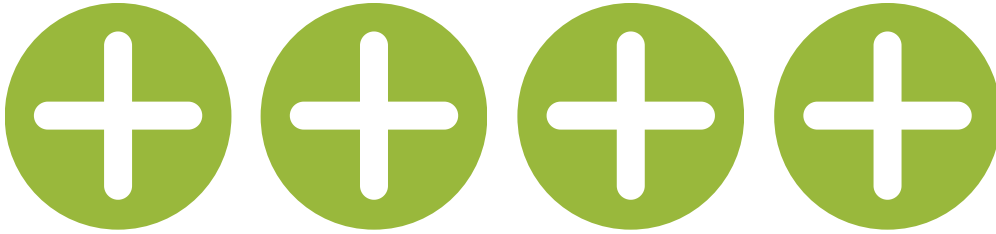
- A commitment to limit greenhouse gases on a global level
- Japan was declared climate leader of the world and was offered the position to lead the next 10 COP meetings
- The United Nations was established
- Countries decided which animals were endangered because of climate change

LEVEL 3



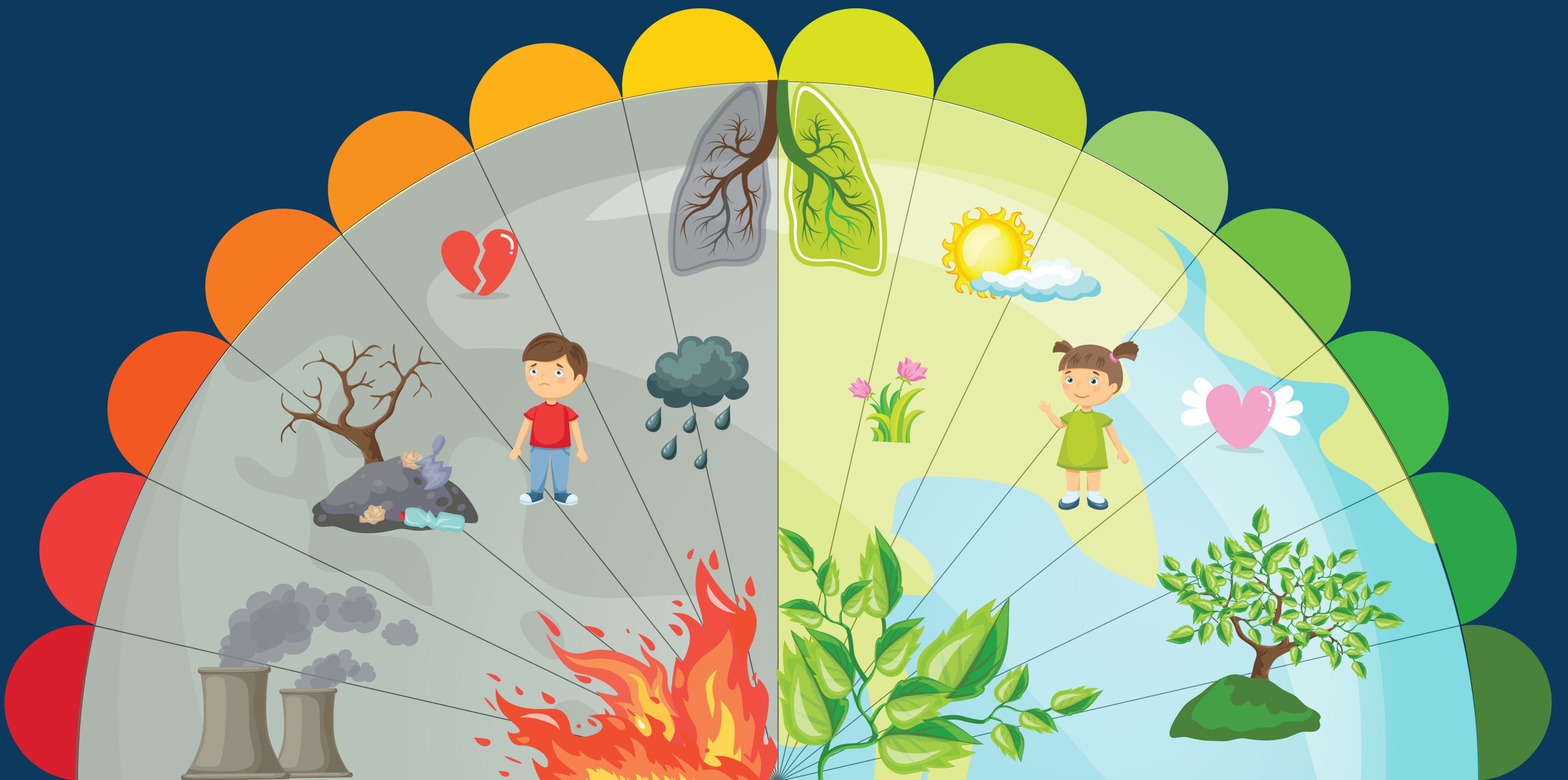
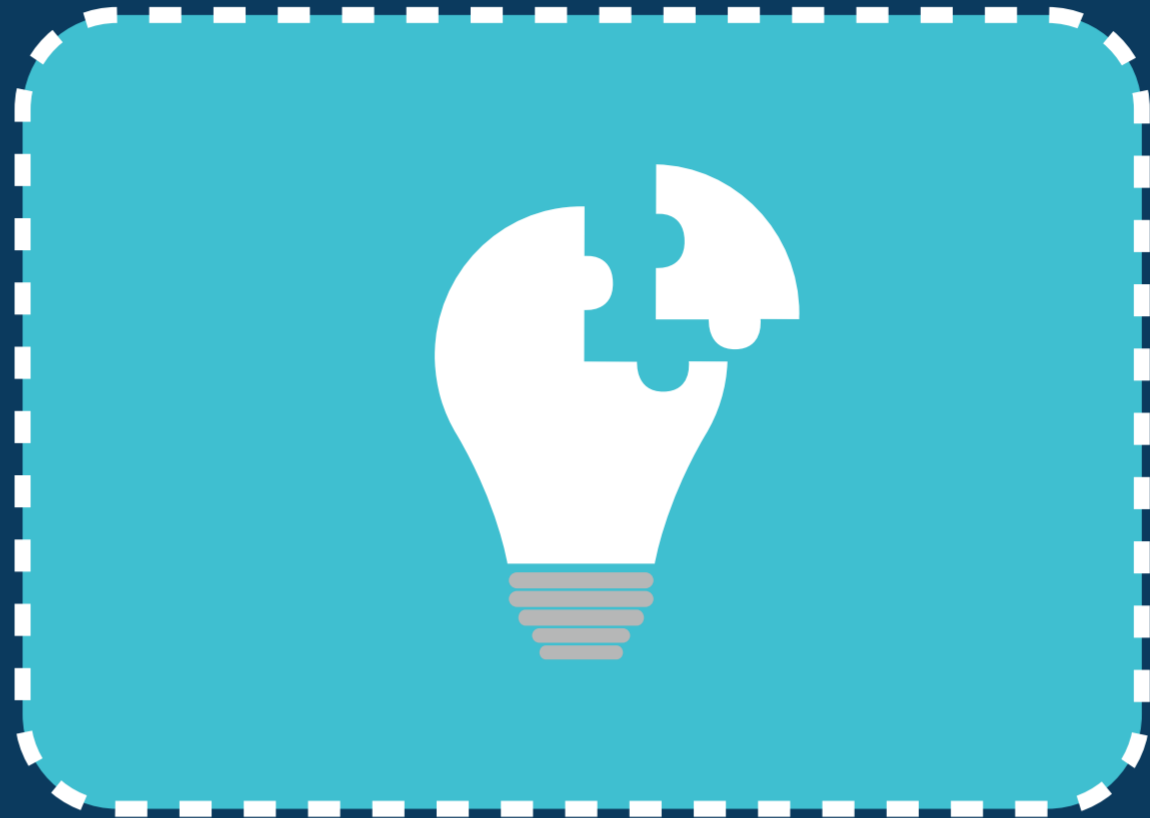


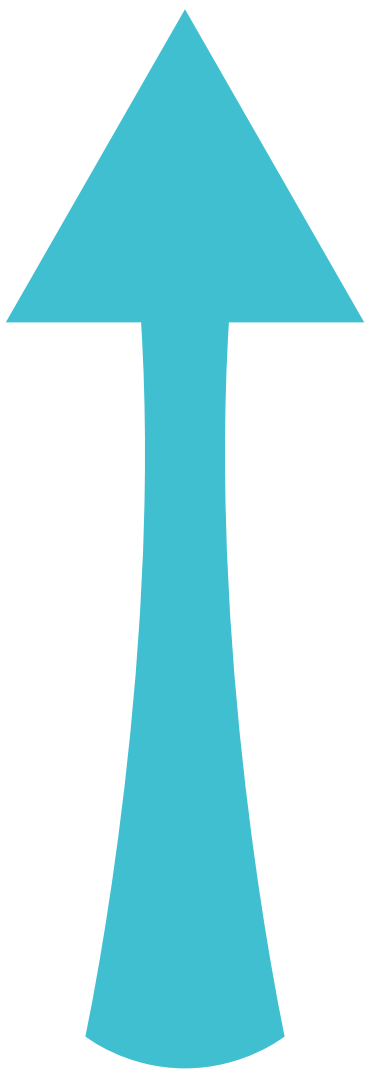




ClimateVerse:

EARTH'S TRIVIA JOURNEY







Start from here (Level 1)

Discuss the following question as a group.
Once you feel comfortable with your answer,
you can start playing the game.

**What is
climate change?**



You can now start playing!

Climate change means that the Earth is getting warmer due to the overproduction of greenhouse gases from activities like driving cars and operating factories. This leads to issues such as melting ice, rising sea levels, and increased extreme weather events, including wildfires and floods.



Start from here (Level 2 & 3)

Discuss the following question as a group.
Once you feel comfortable with your answer,
you can start playing the game.

**What is
climate change?**



You can now start playing!

Climate change is a complex phenomenon characterized by alterations in the Earth's climate system over extended periods. It results from the accumulation of greenhouse gases, primarily carbon dioxide, in the atmosphere due to human activities like the burning of fossil fuels, land-use changes, and industrial processes. This leads to an enhanced greenhouse effect, causing global warming and a range of environmental and societal impacts, including altered weather patterns, sea-level rise, and ecosystem disruptions.



Profile card

**A successful
businesswoman who
owns a luxury resort
in Western Europe.**



Profile card

**A middle age non-binary
constructor worker in
South America.**



Profile card

**A young fisherman
in a village located
on a small island.**



Profile card

**An indigenous woman
living in Eastern Africa
with her family.**



Profile card

**A physically disabled
55-year-old vineyard
owner in Southern Asia.**



Profile card

**A 30-year-old
pregnant woman
from Micronesia.**



A

Problem card

Heatwave

This card affects the following communities:

2, 3, 4, 6



B

Problem card

Malaria outbreak

This card affects the following communities:

2, 4, 5



C

Problem card

Increase in atmospheric ozone

This card affects the
following communities:

1, 5



D

Problem card

Reduction in crop harvest

This card affects the
following communities:

4, 5



E

Problem card

Cholera outbreak

This card affects the following communities:

2, 4, 5



F

Problem card

Eco anxiety rise

This card affects the following communities:

1, 2, 5



Problem card

Post-traumatic stress disorder

This card affects the
following communities:

3, 4, 6



Problem card

Hurricane

This card affects the following communities:

2, 3, 4, 5



Problem card

Fires

This card affects the following communities:

1, 4, 5



Problem card

Floods

This card affects the following communities:

3, 4, 5, 6



Problem card

Storms and sea level rise

This card affects the
following communities:

3, 6



H

Problem card

Water crisis

This card affects the following communities:

3, 4, 5, 6



A

Solution card

Promote heat resilience

Implement heat action plans, create cool zones, and educate communities on how to stay safe during heatwaves.



Solution card

Vector control program

Invest in vector control measures such as mosquito nets, insect repellents, and habitat reduction to minimize disease transmission.



Solution card

Clean energy transition

Transition to clean and renewable energy sources to reduce air pollution and improve air quality.



C

Solution card

Green spaces and urban planning

Create green spaces and implement urban planning strategies to mitigate pollen exposure and improve respiratory health.



D

Solution card

Sustainable agriculture

Promote sustainable farming practices, support local food systems, and reduce food waste to enhance food security.



Solution card

Water treatment infrastructure

Invest in improved water treatment and sanitation infrastructure to ensure safe and clean drinking water.



Solution card

Psychosocial support

Provide mental health services and psychosocial support to communities affected by climate-related disasters.



Solution card

Disaster preparedness

Promote disaster preparedness and resilience, including first aid training and evacuation plans.



Solution card

Water conservation measures

Implement water conservation measures, such as rainwater harvesting and efficient irrigation practices, to address water scarcity.

Question



Health

LEVEL 1



Give a short answer

How can climate change be bad for the quality of the air we breathe and the health of our lungs?

Climate change can be bad for our health in many ways. One example is that the air we breathe is full of small particles, like nitrogen oxides, that damage our lungs, which can lead to different illnesses.

LEVEL 1



Choose the correct **answers**

Which groups are most at risk for heat-related illnesses during heat waves that can be a consequence of climate change?

- | | |
|--|---|
| <input checked="" type="checkbox"/> Children | <input checked="" type="checkbox"/> Seniors |
| <input type="checkbox"/> Healthy adults | <input checked="" type="checkbox"/> Teenagers |

LEVEL 1



Choose the correct **answer**

Which aspects of our health
are impacted by air
pollution?

Physical health

Mental health

Both physical and
mental health

None of the above

LEVEL 1



Choose the correct **answers**

Which of the following health problems can be made worse by air pollution?



Allergies



Faster growth



Superpowers



Sleep

LEVEL 1



Choose the correct **answer**

What can you do to help protect your physical health from the effects of climate change?

- Never use sunscreen
- Stay hydrated and away from sun during heat waves
- Buy more plastic products
- All of the above

LEVEL 1



Choose the correct **answer**

How can your mental health
be affected while spending
time in green spaces?

Feel more worried

Feel better, less
stressed

Less happiness

None of the
above

LEVEL 1



True or false?

**Climate change is only about
rising temperatures and
doesn't affect human and
animal health.**

✗ False

LEVEL 1



True or false?

Climate change is a problem that only affects certain parts of the world, so it doesn't have consequences on everyone's health.

✗ False

LEVEL 1



True or false?

Climate change can cause wildfires to become more common and severe, harming physical and mental health through injuries, smoke exposure, and increased stress.

 True

LEVEL 1



True or false?

Climate change is a worldwide issue that requires action from people globally to protect their own health, future generations, and the planet's well-being.

 **True**

LEVEL 1



Give a long answer

What should you do if there is a lot of rain and a lot of water in the streets (floods)?

You should stay safe inside your home. Try to go to a higher floor in your house if you can, so you stay dry and safe. Don't go out to run or play in the water because it can be dangerous.

LEVEL 1



Give a short answer

How can planting trees help improve air quality and, in turn, be good for our physical health, especially in the areas more affected by climate change?

There are several reasons: Trees absorb carbon dioxide and release oxygen, improving air quality and respiratory health. Additionally, trees can regulate local temperatures, meaning areas with more trees often experience cooler air temperatures.

LEVEL 1

Question



Health



Give a **long answer**

What is climate change?

Climate change refers to long-term shifts in the Earth's average temperature and weather patterns. It's primarily driven by human activities, such as burning fossil fuels and deforestation, which release greenhouse gases into the atmosphere. These gases trap heat, leading to global warming, rising sea levels, and more frequent and severe weather events.

LEVEL 2



Choose the correct **answer**

Which of these can be
a mental health challenge
due to climate change?

Increased access to
clean water

Increased social
support

Climate anxiety and
stress

Improved air quality

LEVEL 2



Choose the correct **answers**

Which of the following health issues are worsened by extreme heat resulting from climate change?



Asthma



Allergies



Diabetes



Broken bones

LEVEL 2



Choose the correct **answer**

What can individuals do to reduce their carbon footprint and contribute to a healthier planet?

Drive alone in a car

Waste water



Use reusable water

All of the above

bottles, bags, and
containers

LEVEL 2



True or false?

Rising sea levels caused by climate change can lead to the contamination of freshwater sources in coastal areas, therefore reducing the water that can be used for drinking.

✓ True

LEVEL 2



True or false?

**Climate change has no
impact on the availability
and quality of drinking
water.**

✗ False

LEVEL 2



True or false?

Climate change has no impact on increasing the spread of infectious diseases such as malaria and tick-borne diseases.

✗ False

LEVEL 2



True or false?

Vulnerable populations, such as low-income communities, are disproportionately affected by the health impacts of climate change.

 True

LEVEL 2



True or false?

Extreme heat waves caused by climate change can lead to heat exhaustion and heatstroke, which are harmful to physical health.

✓ True

LEVEL 2



True or false?

Rising temperatures due to climate change can increase the risk of illnesses like heat-related cramps.

 **True**

LEVEL 2



True or false?

Climate change can lead to an increase in the spread of infectious diseases like malaria.

 True

LEVEL 2



True or false?

Climate change can lead to more frequent and severe natural disasters, such as hurricanes and floods, which can affect people's physical and mental health.

✓ True

LEVEL 2



True or false?

Climate change can affect the habitats of animals, which can indirectly impact human health by disrupting ecosystems and food sources.

 **True**

LEVEL 2



Give a **short answer**

How can we reduce our carbon footprint to help combat climate change and protect our health?

Some solutions include reducing energy consumption, using public transportation, eating less meat, and cutting down on purchases and waste, like clothes, objects, and plastic bottles.

LEVEL 2



Give a **short answer**

How might spending time in nature help improve mental health in the context of climate change?

It could include reducing stress, providing a sense of calm, and promoting physical activity. It can also help to take action in combating climate change through activism.

LEVEL 2



Choose the correct **answer**

Which of these foods has
the highest carbon
footprint?

- Beef
- Eggs

- Vegetables
- Milk

LEVEL 2

Question



Health



Give a **short answer**

**Describe the relationship
between climate change
and Zika virus.**

Climate change can lead to the spread of diseases such as Zika and malaria by enlarging the habitats suitable for disease-carrying mosquitoes, thereby increasing the regions where these mosquitoes can survive and infect humans.

LEVEL 3



Choose the correct **answer**

Which of the following is not a potential consequence of climate change on mental health?

- Increased stress and anxiety
- Decreased risk of depression
- Post-traumatic stress disorder (PTSD)
- Sleep disturbances

LEVEL 3



Choose the correct **answers**

Which of the following is a direct health consequence of climate change for vulnerable populations?

- Decreased food insecurity
- Increased access to healthcare

- Greater risk of heat-related illnesses
- Lower prevalence of chronic diseases

LEVEL 3



Choose the correct **answers**

Which groups are more susceptible to heat-related illnesses from extreme heat linked to climate change?

- Office workers
- Pregnant women

- Receptionists
- Construction workers

LEVEL 3



True or false?

Climate change can lead to food insecurity, especially among indigenous populations that sometimes rely on traditional farming practices.

✓ True

LEVEL 3



Give a long answer

Explain the concept of "environmental justice" in the context of climate change and its implications for vulnerable communities.

Environmental justice, in the context of climate change, is about ensuring that all communities, especially those that are vulnerable or disadvantaged, are treated fairly and equitably when it comes to environmental policies and the impacts of climate change. It means that the burdens of climate change, like pollution and extreme weather events, shouldn't unfairly fall on certain groups, such as low-income or minority communities. Instead, efforts should be made to protect and involve these communities in climate action to reduce inequalities and promote a healthier environment for everyone.

LEVEL 3



Give a **long answer**

Name one way in which climate change can impact the availability of fresh, clean water and explain its health consequences.

Reasons include rising temperatures impacting the water cycle, leading to more ice melt and rising sea levels. This can pollute freshwater sources, affecting drinking water quality and the ability to irrigate fields.

LEVEL 3

Question



Environment

LEVEL 1



Choose the correct **answer**

Which gas, often seen as the main cause of climate change, is released when we burn fuels like coal and oil?

Oxygen

Helium



Carbon dioxide

Nitrogen

LEVEL 1



Give a **short answer**

How do we call an unusually long and intense period of hot weather for a certain area?

Heatwave

LEVEL 1



Give a **short answer**

What is the name for a destructive windstorm driven by warm ocean waters, often linked to climate change?

Hurricane or typhoon
(depending on the region)

LEVEL 1



Choose the correct **answer**

What animal spreads
malaria in the human
population?

- | | |
|--|--|
| <input checked="" type="checkbox"/> Female Anopheles Mosquitos | <input type="checkbox"/> North American Brown Rats |
| <input type="checkbox"/> Goliath Tigerfish | <input type="checkbox"/> Rufos-bellied Thrushes |

LEVEL 1



Choose the correct **answer**

Which gas, often seen as the main cause of climate change, is released when we burn fuels like coal and oil?

- Nitrous oxide
- Carbon dioxide

- Methane
- Iron

LEVEL 1



Choose the correct **answer**

Which of the following is a major contributor to food waste in households?

Eating leftovers

Meal planning

Buying in bulk

Poor storage and management of food

LEVEL 1



Choose the correct **answer**

Increased ocean temperatures
are a threat to which vital
marine ecosystems found
in tropical regions?

Mangrove
forests

Coral reefs

Seaweed
forests

Estuaries

LEVEL 1



Give a **short answer**

What is the name for a long period of below-average rainfall that can lead to water shortages, crop failures, and threats to food, worsened by climate change?

Drought

LEVEL 1



Give a **short answer**

Which extreme weather event, influenced by climate change, involves periods of long, intense rainfall that can cause rivers to overflow their banks?

Flood (river flooding)

LEVEL 1



Choose the correct **answer**

Climate change can disrupt ecosystems, leading to shifts in species distribution. What is the term for the process in which species move to cooler regions as temperatures rise?

- Hibernation
- Migration

- Photosynthesis
- Adaptation

LEVEL 1

Question



Environment

LEVEL 2



Give a **short answer**

What is a large-scale weather system characterized by strong winds rotating around a central low-pressure area, typically with a well-defined center known as the eye?

Cyclone

LEVEL 2



Choose the correct **answer**

What percentage of food produced for human consumption is estimated to be lost or wasted globally each year?

5%



33%

20%

50%

LEVEL 2



Choose the correct **answer**

What percentage of water
on Earth is usable and
available fresh water?

0.5%

5%

8%

15%

LEVEL 2



Choose the correct **answer**

How do soil erosion and degradation affect agricultural productivity and food security?

- Have no impact
- Improve soil quality

- Reduce productivity and food security
- Increase food security

LEVEL 2



Choose the correct **answer**

How much water is wasted globally every year?

- 34 million litres
- 310 million litres

- 1 trillion litres
- 6.4 trillion litres

LEVEL 2



Give a **short answer**

Rising global temperatures, causing glaciers and ice sheets to melt, can lead to higher sea levels and a greater risk of what type of extreme weather event along coastlines?

Coastal flooding or storm surges

LEVEL 2



Give a **short answer**

What is the term for the practice of reducing greenhouse gas emissions through actions like using energy-efficient appliances and vehicles?

Mitigation

LEVEL 2



Give a **short answer**

What is the term for strategies that involve changing due to the impacts of climate change, such as building flood defences and drought-resistant crops?

Adaptation

LEVEL 2



Give a **short answer**

What is the primary human activity causing deforestation, releasing carbon from trees and contributing to climate change?

Logging or clear-cutting

LEVEL 2



Give a **short answer**

Which extreme weather event is often linked to flooding, landslides, and property damage, with climate change increasing the risk?

Heavy rainfall or deluge

LEVEL 2

Question



Environment

LEVEL 3



Give a **short answer**

As atmospheric carbon dioxide levels rise, which vitamins are lost, leading to decreased nutritional value in crops like corn and wheat?

Iron and zinc

LEVEL 3



Give a **short answer**

What is the term for rotating different crops in the same field across seasons to enhance soil health and increase crop yields, often used to combat food scarcity?

Crop rotation

LEVEL 3



Give a **short answer**

What term describes the transformation of fertile land into desert due to climate change, contributing to food scarcity?

Desertification

LEVEL 3



Give a **short answer**

The spread of which diseases, such as cholera and dysentery, can be facilitated by extreme weather events like floods and hurricanes associated with climate change?

Waterborne diseases

LEVEL 3



Give a **short answer**

What is the name of the process where carbon dioxide is absorbed by the oceans, making seawater more acidic and affecting marine ecosystems?

Ocean acidification

LEVEL 3



Choose the correct **answer**

As global temperatures rise, many plant and animal species face increased risk of extinction. What is the term for species that are highly vulnerable to climate change impacts?

- Endangered species
- Indicator species
- Keystone species
- Climate-sensitive species

LEVEL 3



Choose the correct **answer**

Rising global temperatures can lead to the depletion of what vital underground water source, particularly in arid regions?

Rivers



Aquifers

Oceans

Lakes

LEVEL 3



Choose the correct **answer**

What is the term for the natural process that removes carbon dioxide from the atmosphere and stores it in carbon sinks, helping to regulate the Earth's climate?

Carbon footprint

Carbon cycle

Carbon capture and storage (CCS)

Carbon exchange

LEVEL 3



Choose the correct **answer**

What is the name of the branch of science that studies the effects of climate change on the timing of natural events in ecosystems, like flowering or migration?



Phenology



Succession



Ecotone



Symbiosis

LEVEL 3

Question



Governance

LEVEL 1



Choose the correct **answer**

What does IPCC stand for?

- International Panel on Cake Creation
- Indifferent Politicians against Climate Change
- International Panel on Cookies and Cream
- Intergovernmental Panel on Climate Change

LEVEL 1



Choose the correct **answer**

Which country hosted the United Nations Framework Convention on Climate Change (UNFCCC) conference in 2015, leading to the Paris Agreement?

Germany

Brazil



France

United States

LEVEL 1



Choose the correct **answer**

What is the WHO?

- World Health Organization
- Weather and Health Organization
- Worldwide Humanitarian Organization
- Waste and Hunger regulating Organization

LEVEL 1



Choose the correct **answer**

The WHO is a ...
agency

Council of Europe
(CoE)

United Nations
(UN)

European Union
(EU)

North-Atlantic Treaty
Organization (NATO)

LEVEL 1



Choose the correct **answer**

What is the common abbreviation for the Intergovernmental Panel on Climate Change, a scientific body that assesses climate change science?



IPCC



UNFCCC



GCF



WHO

LEVEL 1



Choose the correct **answer**

The 2015 Paris Agreement committed to limit the rise in global average temperature to 1.5°C above pre-industrial (1800s) levels through climate mitigation by:

2015

2030

2050

2100

LEVEL 1

Question



Governance

LEVEL 2



Choose the correct **answer**

What is the purpose of the Montreal Protocol?

- Address climate change
- Protect the ozone layer
- Promote sustainable agriculture
- Regulate international trade

LEVEL 2



True or false?

International Youth Health Organization (YHO) recognizes environmental health and climate change as one of its priorities.

 True

LEVEL 2



Choose the correct **answer**

What is the role of the World Health Organization (WHO) in climate change adaptation and health?

Monitoring carbon emissions

Regulating emissions of all greenhouse gases

Providing guidance on public health impacts of climate change

Actively promoting nuclear energy

LEVEL 2



Choose the correct **answer**

The EU took a major step in climate change regulations in 2020 when they passed the...

- | | |
|--|--|
| <input type="checkbox"/> NextGen EU Plan | <input type="checkbox"/> Natural Resources Deal |
| <input type="checkbox"/> European Future | <input checked="" type="checkbox"/> Green New Deal |
| <input type="checkbox"/> Vision | |

LEVEL 2



Choose the correct **answer**

What is the "two-degree target" in relation to climate policy?

- Limiting global warming to a 2°C increase above pre-industrial levels
- Achieving a 2% reduction in emissions annually
- Phasing out 2% of fossil fuel subsidies
- Increasing renewable energy by 2% each year

LEVEL 2



Choose the correct **answer**

Name the UN agency responsible for preventing new disaster risks and enhancing resilience through comprehensive multi-hazard risk management.

- United Nations Disaster Prevention (UNDP)
- World Hazard Organization (WHO)
- United Nations Environment Programme (UNEP)
- United Nations Office for Disaster Risk Reduction (UNDRR)

LEVEL 2



True or false?

UN Secretary General António Guterres denied the climate emergency by saying: "Floods, droughts, heatwaves, extreme storms, and wildfires are going from good to better, not breaking records with alarming frequency. Heatwaves in Europe are a hoax. Colossal floods in Pakistan do not exist. Prolonged and severe droughts in China, the Horn of Africa and the United States are just myths."

✗ False

LEVEL 2

Question



Governance

LEVEL 3



Choose the correct **answer**

What is the primary focus of the World Meteorological Organization (WMO) in relation to climate change?

- Disaster relief efforts
- Provide weather and climate information worldwide to prepare for weather and climate events
- Present a daily international weather forecast
- Promoting fossil fuel use and advocating for carbon capture techniques in partnership with private partners

LEVEL 3



Choose the correct **answer**

The Loss and Damage Fund was agreed to at which COP?

- | | |
|---|---|
| <input type="checkbox"/> COP20 (Lima, 2014) | <input type="checkbox"/> COP5 (Bonn, 1999) |
| <input checked="" type="checkbox"/> COP27 (Sharm el-Sheikh, 2022) | <input type="checkbox"/> COP10 (Buenos Aires, 2004) |

LEVEL 3



Choose the correct **answer**

In the context of climate negotiations, what does CMA stand for?

- Climate Market Agreement
- Climate Monitoring Authority
- Conference of the Parties serving as the Meeting of the Parties to the Paris Agreement
- Carbon Mitigation Alliance

LEVEL 3



Choose the correct **answer**

In climate negotiations, what is meant by "common but differentiated responsibilities"?

- Equal distribution of emissions between countries
- Joint and equal responsibility for climate change
- Sharing common responsibilities while acknowledging different capacities to fulfilling commitments by individual countries
- A global carbon tax to all companies and countries

LEVEL 3



Choose the correct **answer**

Which international agreement established the Convention on Biological Diversity (CBD)?

Montreal Protocol

Paris Agreement

Kyoto Protocol

Rio Earth Summit

LEVEL 3

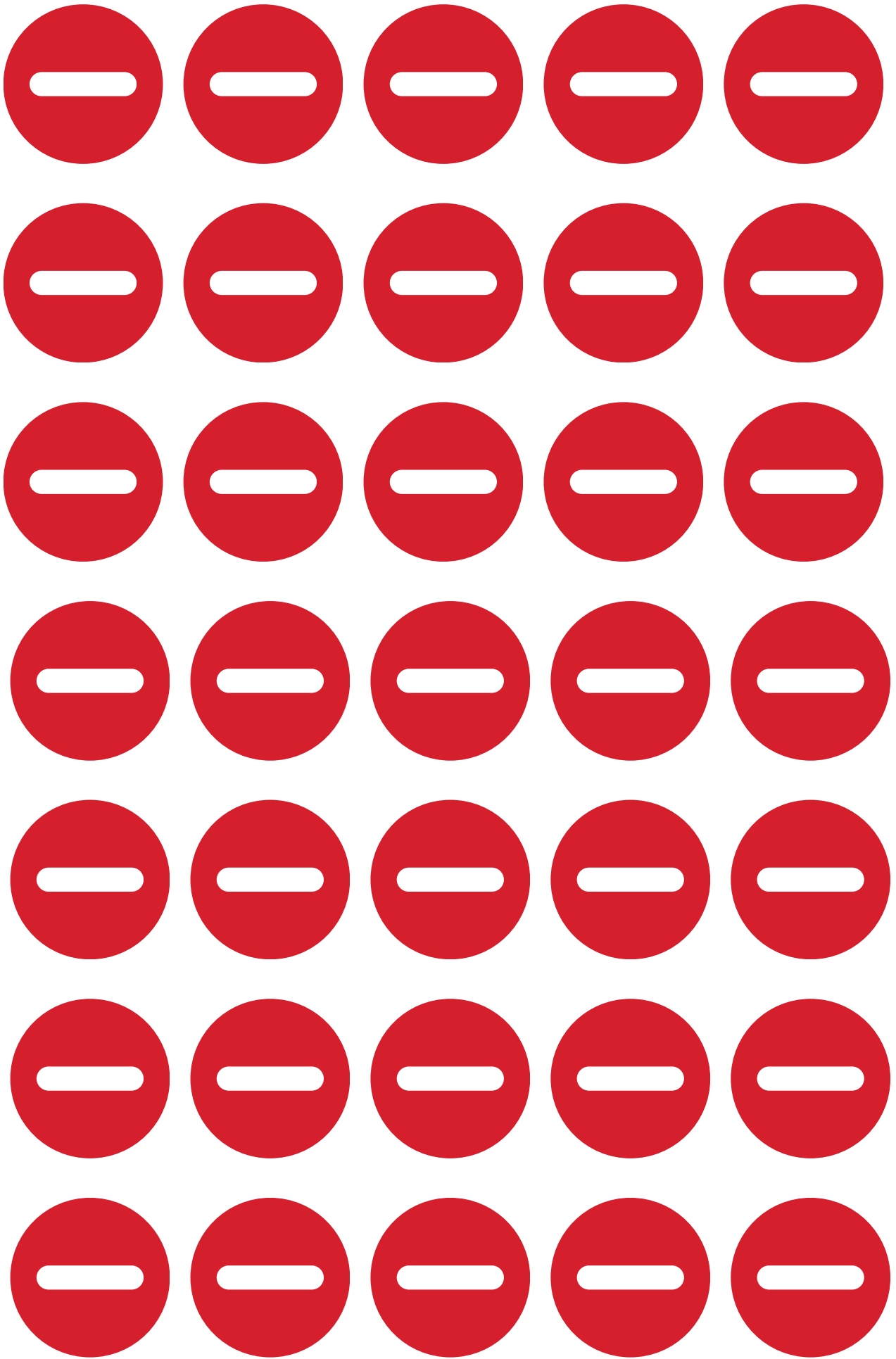


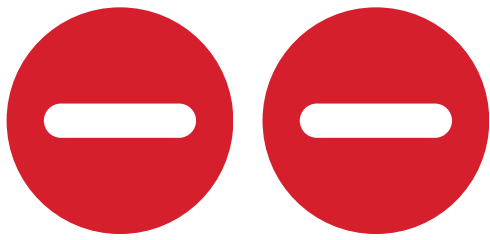
Choose the correct **answer**

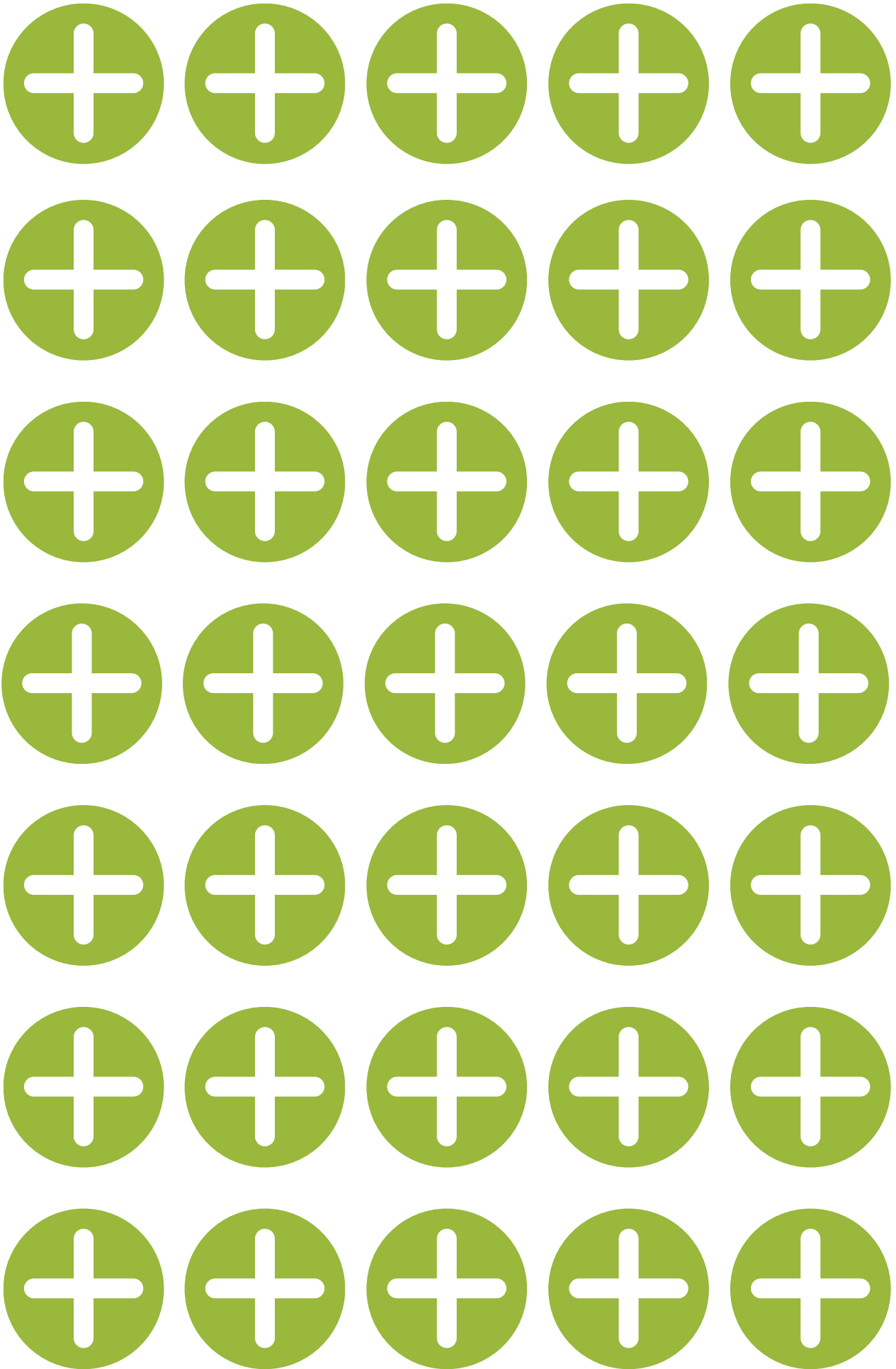
What was the main outcome of the Kyoto Protocol, adopted in 1997?

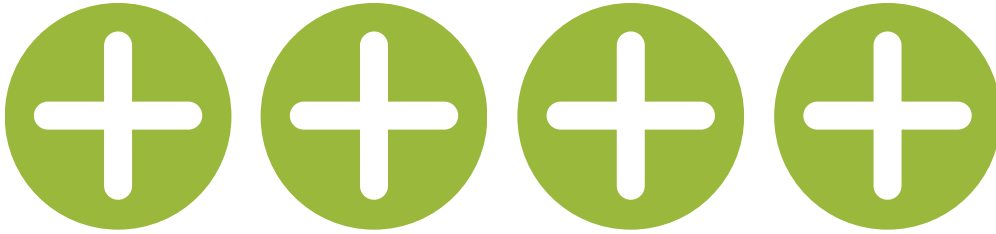
- A commitment to limit greenhouse gases on a global level
- Japan was declared climate leader of the world and was offered the position to lead the next 10 COP meetings
- The United Nations was established
- Countries decided which animals were endangered because of climate change

LEVEL 3









ClimateVerse:

EARTH'S TRIVIA JOURNEY

